

# WealthTV

YOUR LUXURY LIFESTYLE AND ENTERTAINMENT NETWORK

## Call Center Training One Sheet on WealthTV

**What is WealthTV?** - WealthTV is the premier lifestyle, entertainment, and informational network – the destination for exclusive and original programming, available in standard digital and **high definition**. WealthTV delivers to viewers informative shows that provide invaluable insights on what every American dreams of – from travel secrets to fast cars, from better etiquette to better investing, and much more.

Televised 24-hours a day/ 7 days a week, WealthTV is the network for those wanting to live the American dream now via their television and seeking insight from those who have achieved success. The network fills a television vacuum by delivering intellectually stimulating and always-unbiased news and thought-provoking entertainment from an insider's perspective.

**Where is WealthTV found in the Channel Lineup?** - WealthTV in digital is available on channel \_\_\_\_ on the \_\_\_\_\_ tier. WealthTV in High Definition is available on channel \_\_\_\_.

**What Kind of Programming Does WealthTV Offer?** - WealthTV delivers to viewers informative shows that provide invaluable insights on what every American dreams of – from travel secrets to fast cars, from better etiquette to better investing, and much more.

**Who does WealthTV Appeal to?** - WealthTV's inspirational programming line-up has a broad appeal across all demographics, allowing viewers to enjoy the American Dream now via their television. WealthTV's programming lineup is highly entertaining and family friendly.

**Where Can I find Program Scheduling and Other information on WealthTV?** - WealthTV's weekly program schedule, along with additional information, is available on its website, [www.wealthtv.net](http://www.wealthtv.net).

## PROGRAMMING HIGHLIGHTS



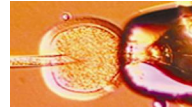
**WEALTH on WHEELS** - A wealth of luxurious cars are showcased in this fast paced show.



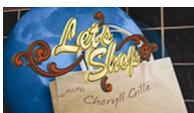
**GIVING BACK** - A wealth of compassion is highlighted in the series on philanthropy.



**CHIC!** - A look at the latest in trends lifestyle & luxury from the best spas to the trendiest boutiques



**WEALTH on HEALTH** - An in-depth series on the latest medical breakthroughs.



**LET'S SHOP** - A global adventure of the most exclusive, exciting and famous shopping destinations in the world.



**WHAT to WEAR** - Find out what the hottest fashions are as we visit with top designers from around the world.



**THE RAY LUCIA SHOW** - Ray Lucia, CFP, the nationally renowned expert on financial and business matters answers your questions in this **educational** series.



**WORLD of WEALTH** - Explore the issues and influences that shape business from a global perspective.